



VERBIER

— EXCLUSIVE —



COMING SOON



CHALET KITSILIANO

VERBIER | SLEEPS 10



This brand new addition for season 24/25 will be finished to the highest of standards and will offer a large open plan living-dining area with spectacular views across the valley.

Chalet Kitsiliano will offer five sumptuous bedrooms, all with en-suite bathrooms including 3 bath tubs, and a large communal living space making it the ideal base for multi-generational families.

COMING SOON

# FACILITIES

- Professional Chef
- Chalet Host
- 24-hour in-resort driving service
- Outdoor hot tub
- Fully equipped gym
- Hairdryers in every bedroom
- Sonos music system & Bose speakers
- iPad
- Large south facing balcony
- Parking
- 320 sq.m





This property's distinctiveness will lie in its expert, high-end finishes, which not only exude luxury but will also create a welcoming, homey atmosphere. After a day's skiing you will enter via the lower floor where the impressive boot room awaits, including those all-important boot warmers. For those wishing to remain active, there will be a fully equipped gym while those who prefer to wind down, can relax in the outdoor hot tub or sit by the warmth of the firepit enjoying a glass of mulled wine.



# ROOM LAYOUT

Room 1: Master super-king  
with en suite bathroom

Room 2: King/twin with en  
suite bathroom

Room 3: King/twin with en  
suite bathroom

Room 4: King/twin with en  
suite shower room

Room 5: King/twin with en  
suite shower room



COMING SOON

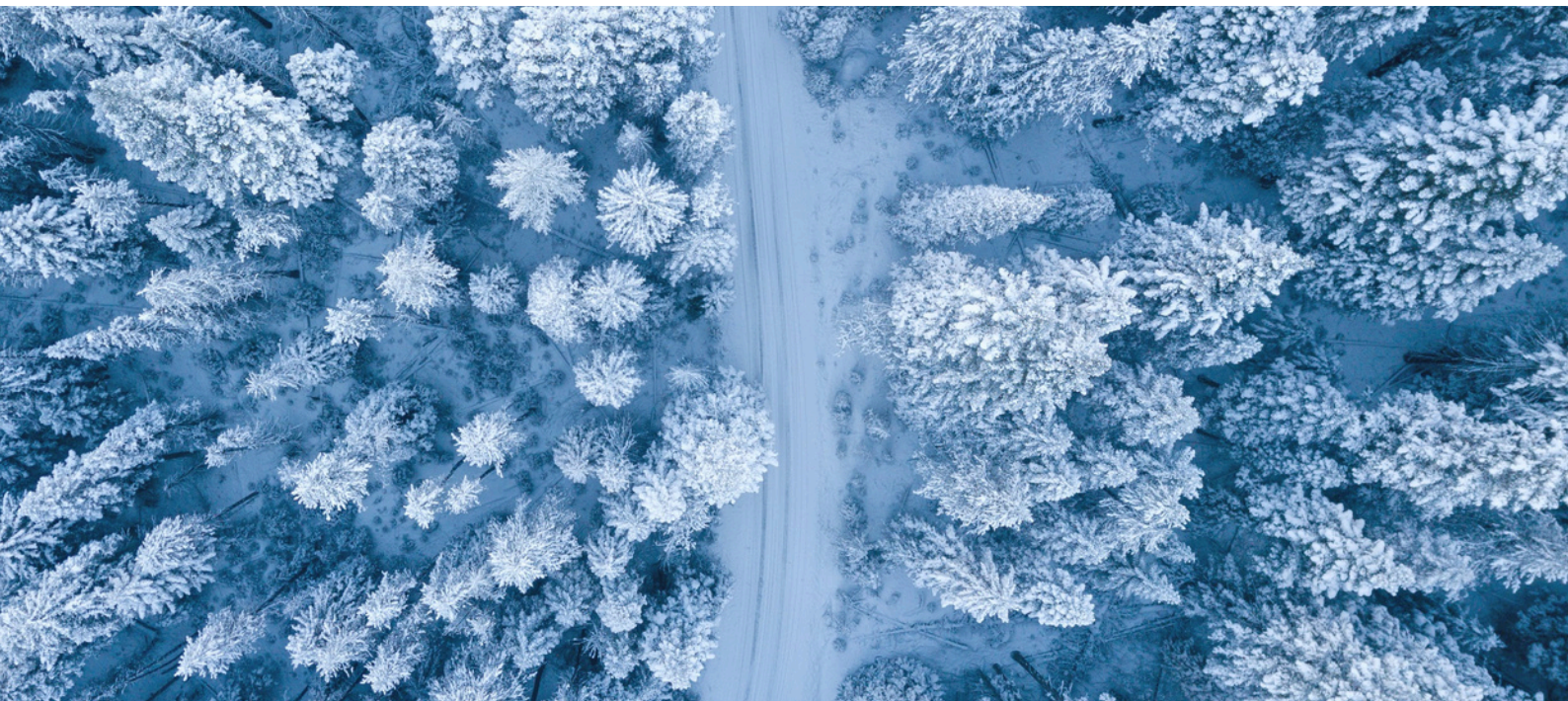
COMING SOON

COMING SOON



Adjacent to the living area will be a vast wrap-around balcony that will offer various views of the stunning surroundings, making it the perfect spot for pre-dinner drinks and canapés. And if anyone needs peace and quiet, the stylish office will offer a calm and opulent space in which to focus.

Located just off the Chemin de la Bergerie, Chalet Kitsiliano is only a 5-6 minute chauffeured drive to the Médran lift or for the more energetic, a 15-minute walk will see you in Place Centrale.





# Included in the price

A highly experienced team of chalet staff

Daily breakfast & afternoon tea

Fabulous dinners on 5 nights per week

Premium selection of champagnes, wines, beers, spirits & soft drinks

Early children's dinner (if required)

24-hour in-resort driving service

Daily chalet cleaning

Midweek towel change

Comprehensive in-resort concierge service

Detailed, personal pre-arrival planning with one of our expert concierge team

Bamford Organic Bath & Body products

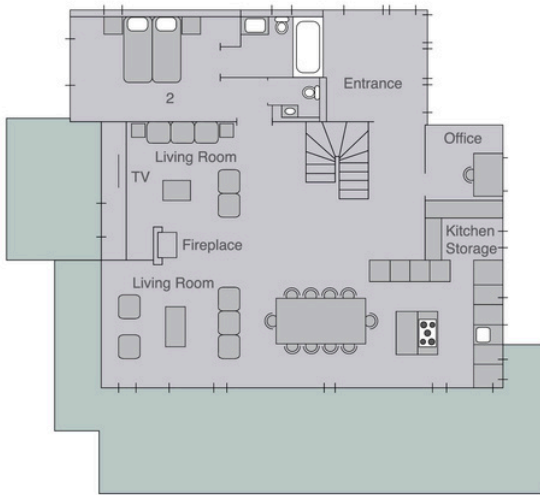
All local taxes



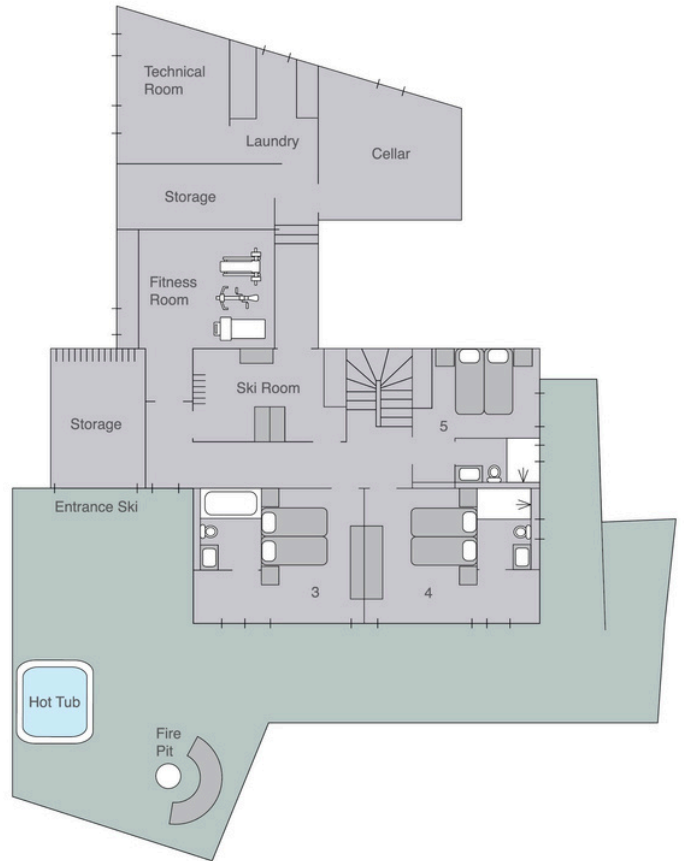
# FLOORPLAN

(Illustration purposes only)

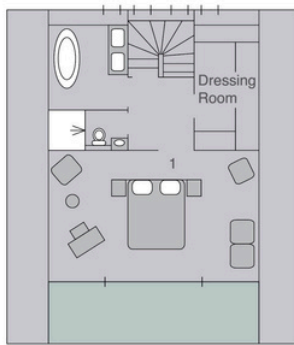
Floor 1



Floor 2



Floor 3







There has been a great deal of interest in this stunning chalet which will be ready to welcome its very first guests for the 24/25 winter season so early booking is recommended for this exciting addition to our portfolio. More information and photos coming soon...